

Access



Access Products*

- System Ladder
- SL II Bracket
- Guardrail Standard
- Intermediate Plank Support
- Beam Rider

Safety



Safety Products*

- Single Panel Swing Gate
- Double Panel Swing Gate
- System Toeboard
- Single Panel Swing Gate Toeboard
- Double Panel Swing Gate Toeboard
- System Ladder Cage
- Ladder Cage
- Swing Gate Guardrail
- Ladder Cage Exit Section
- Davit Arm

Decking



Decking Products*

- SPII Steel Planks
- Laminated Planks
- Work Platforms

* See detailed Product Guides for additional information on Sure Lock® accessories.

Supporting Industry Worldwide

Our customers know they can trust a company that clocks in more than three million hours of labor each year, while keeping the lowest insurance rates in the industry. Creating a scaffold system with the highest levels of safety and quality is not just a core value at Aluma Systems - it's a necessity. At Aluma Systems we specialize in more than scaffolding equipment and innovation. We specialize in project management, and bring our customers the most cost-effective and successful strategies for all your industrial scaffolding applications.



**Aluma Systems
Industrial Services**

6366-50th Street
Edmonton, Alberta
Canada T6B 2N7
T 780.440.1320
F 780.440.2535

www.aluma.com



©2008 Brand Services, LLC All Rights Reserved. Aluma Systems is a Brand Services company

Aluma Sure Lock®

Product Sheet SL_01_09.05

**Aluma Systems
Industrial Scaffolding**

Aluma Sure Lock®: The Key to Your Success

Introduction

Aluma Sure Lock® is a lightweight modular scaffold system that requires no loose fittings, shortens erection and dismantling time and saves labor costs.

Each component fits precisely into the unique Sure Lock® rosette, and locks securely by simply hammering a captive wedge into place. The systems' pre-engineered and pre-measured components only fit together in a safe and efficient configuration.

Every piece of the Aluma Sure Lock® System is hot dipped, galvanized, high tensile steel which limits corrosion and increases the life of our equipment.

With an extensive line of efficiency enhancing accessories, Aluma Sure Lock® is one of the most cost effective system scaffolds in the world.



* **Note:** Equipment shown is for demonstration purposes only

Safe

- The Wedge requires no loose fittings for easy erection and dismantling
- Sure Lock®'s pre-measured and pre-engineered components make it easy to fit together in a safe configuration
- The engineered Rosette allows for efficient node point connections

Smart

- The Sure Lock® Rosette offers eight connection points on each rosette including self-centering right angle connections
- The horizontal ledgers and diagonal bay braces incorporate our signature ledger head at each end
- Rosette and Wedge connections can be installed and removed independently

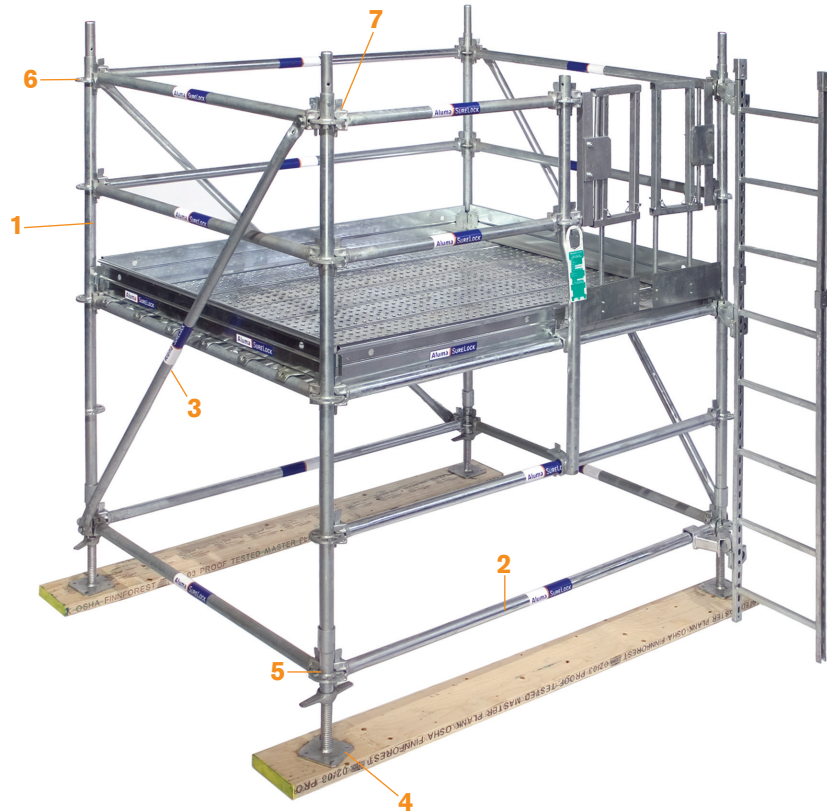
Efficient

- Aluma Sure Lock® reduces labor costs and improves scheduling by eliminating loose fittings from the system's design
- With fewer pieces than other systems, Aluma Sure Lock® reduces handling on site and makes shipping efficient
- No bulky frames or heavy steel parts make the system easy to load, unload, erect and knock-down



1. Standards

The main vertical load bearing support in the Sure Lock® system is the Standard. Available in five sizes, each is pre-engineered to include the steel rosettes at 500 mm (19.6") centers. A removable spigot at each end allows Standards to be joined end-to-end and pinned. Standards are available in sizes ranging from 0.5m(1'-7") to 3.0m(9'-10")

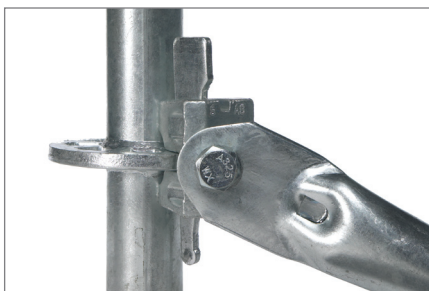


* **Note:** Equipment shown is for demonstration purposes only



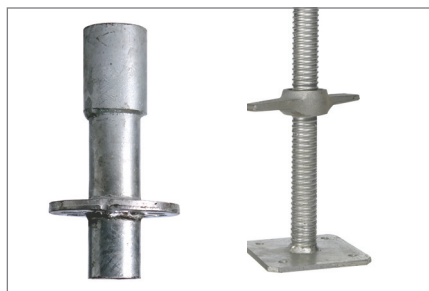
2. Ledgers

Ledgers are used to tie the standards together horizontally and also provide support to the planking or decking system. The captive wedge on each end allows the ledger to be easily attached to any rosette on the Sure Lock® Standards. Ledgers are available for the following bay sizes; 0.65m(2'-2"), 1.15m(3'-10"), 1.57m(5'-2"), 1.63m(5'-4"), 2.13m(7'-0") and 3.05m(10'-0").



3. Diagonal Braces

Diagonal Braces are used to increase the stiffness and rigidity to all scaffolds. The swiveling Ledger Head at each end allows you to use the brace at any angle. Simply lock them into any Standard's rosette. Diagonal Braces are available for the following bay sizes; 1.15m(3'-10"), 1.57m(5'-2"), 1.63m(5'-4"), 2.13m(7'-0") and 3.05m(10'-0").



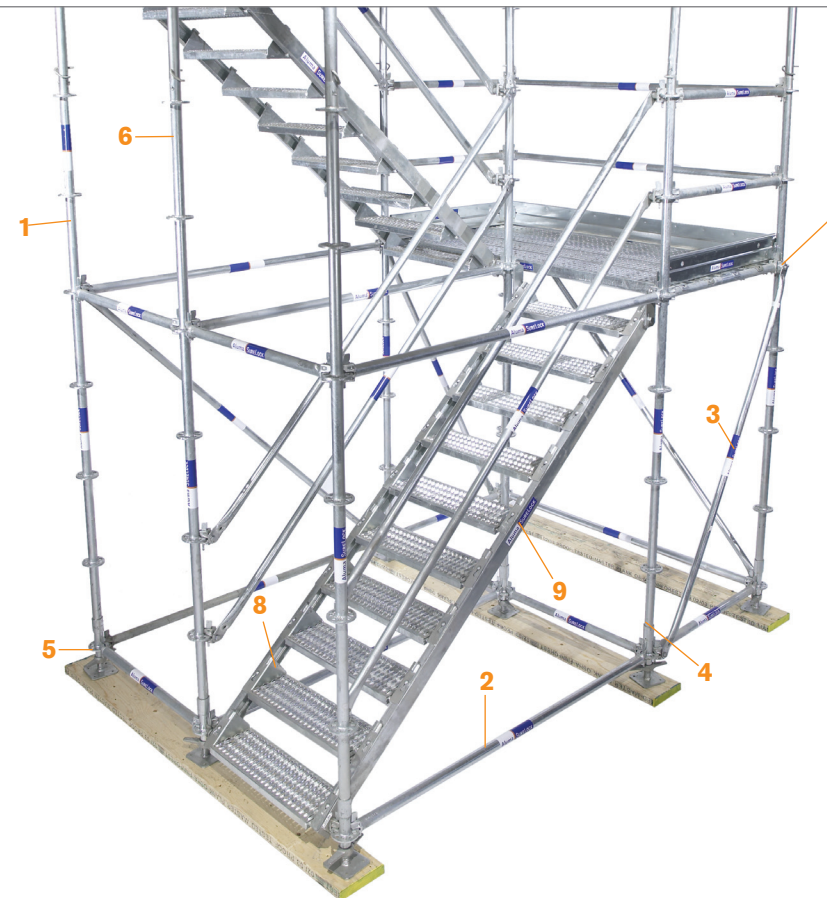
4. & 5. Screw Jack & Base Collar

The Sure Lock® Screw Jack has a special self-cleaning, low maintenance, quick-spin thread, which enables a scaffolder to adjust the level of the bay quickly and easily. If you're working on a sloped surface, the Swivel Base Jack allows you to safely secure the bay's footing no matter what angle. Starting a scaffold bay is simple. Just fit a base collar over a screw jack and adjust the level of your bay.

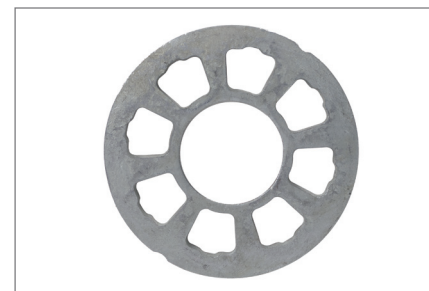
Not all components and accessories shown. Please refer to Sure Lock® component and accessory product guides for more information. Consult our Engineering Department for assistance in the application of these accessories. Illustrations and photos are not to scale. All dimensions nominal.

Sure Lock® Stairway

In addition to the System Scaffold, Aluma Engineers have designed a completely modular Sure Lock® Stairway. Quick and easy to erect, dismantle and ship, the Sure Lock® Stairway is like no other stairway on the market today. Create a stairway anywhere in your Scaffolding by simply adding two Stairway Stringers and the non-slip, self-cleaning treads. It's that simple.

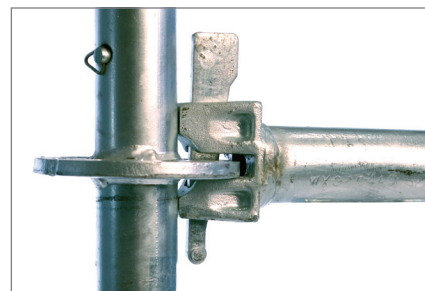


* **Note:** Equipment shown is for demonstration purposes only



6. Rosettes

The key to the Sure Lock® System Scaffold is its patented Rosette. With 8 possible connections on the same plane and automatic 90° degree and 45° degree angled connections, the Rosette gives your scaffolders flexibility, rigidity and efficiency.



7. Ledger Head & Wedge Connection

The Ledger Head and Wedge ensures each piece is connected securely to the rosette. The use of the Ledger Head also eliminates loose fittings - no spring-loaded pins or bolts that might get lost, freeze or even rust.



8. & 9. Stairway Tread & Stringer

Stairway Treads are designed to be securely fastened to the button-head fittings on the Stairway Stringers. The Tread profile incorporates drainage holes and anti-slip surface. The Stairway Stringer fits a 2.13m(7') bay size. The top and bottom wedge clamps fit directly into the Rosettes.

Not all components and accessories shown. Please refer to Sure Lock® component and accessory product guides for more information. Consult our Engineering Department for assistance in the application of these accessories. Illustrations and photos are not to scale. All dimensions nominal.